

Smarter Balanced Software Installation

Note: This Job Aid is written using the Firefox Web Browser. If using Internet Explorer, it may look slightly different.

Step 1: Navigate to the Smarter Balanced Installation web site at <http://www.sandi.net/Page/61001>.

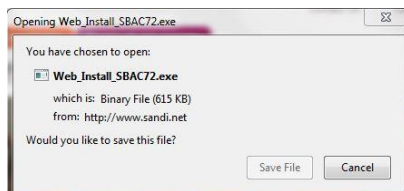
Step 2: Locate “Scenario 4” in the section under “Installation” titled “What if the Smarter Balanced Secure Browser did not install on the Netbook OR had technical issues when installing the first time? Click on the link called Smarter Balanced Alternate Installation.

Scenario 4: Alternate Installation - The Smarter Balanced software did not install and is not available in Run Advertised Programs (Windows 7) OR there is an issue with the installation. **Note: A Windows 8.1 is not yet available.**

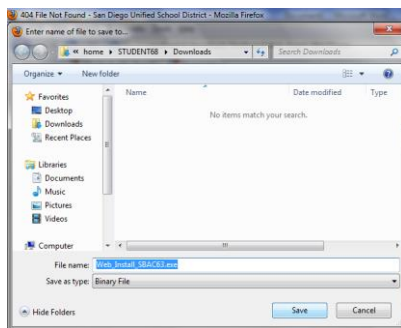
Please use the following [link](#) and [Job Aid](#) to install the Smarter Balanced Software. **Note:** There will be no need for additional computer permissions to install this and even students can conduct the installation while logged in as needed.

[Smarter Balanced Alternate Installation](#)

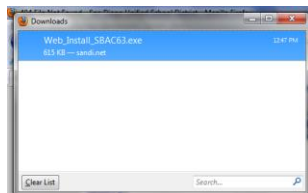
Step 3: Click Save File when the following window appears.



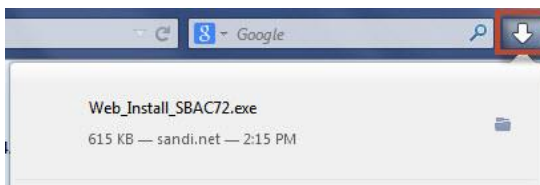
Step 4: Save the file to a convenient location. The default location will be downloads.



Step 5: Once the file is downloaded, the program can be run by double-clicking on the file name in the web browser downloads window. Note: If the downloads window is not present, please locate the file where it was saved and double-click to begin the installation.



Firefox Version 17



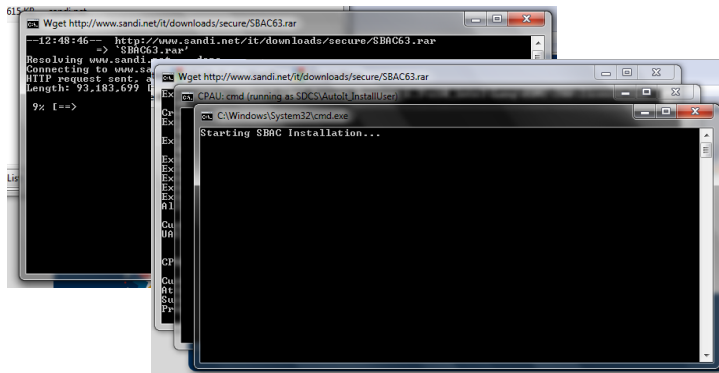
Firefox Version 31

Smarter Balanced Software Installation

Step 6: The SDUSD Smarter Balanced Secure Browser 7.2 window will appear. To begin the removal of the old Smarter Balanced Secure Browser and the installation of the new Secure Browser 7.2, click the “Yes” button.



Step 7: A black window as pictured below will appear indicating the installation has begun. Over the course of the installation multiple windows will appear. When the installation is completed, the black windows will close automatically.



Step 8: Once the installation has completed, the Smarter Balanced Secure Browser 7.2 icon will appear on the computer’s desktop.

